



11 Jandari Mews Success, WA

3 2 2

## LOOKING FOR DIFFERENT?

Forget 'normal' housing get 'edgy' with this stylish pad that's just UBER cool!!! Ideal for so many buyers that competition will be strong!  
don't miss out because you were too late to react get registered now!  
Check out the design, the look, the feel and above all the style! With an inner city warehouse feel your gonna LOVE living here.  
Waste no more time register your interest at [teamking@grwa.com.au](mailto:teamking@grwa.com.au) RIGHT NOW!

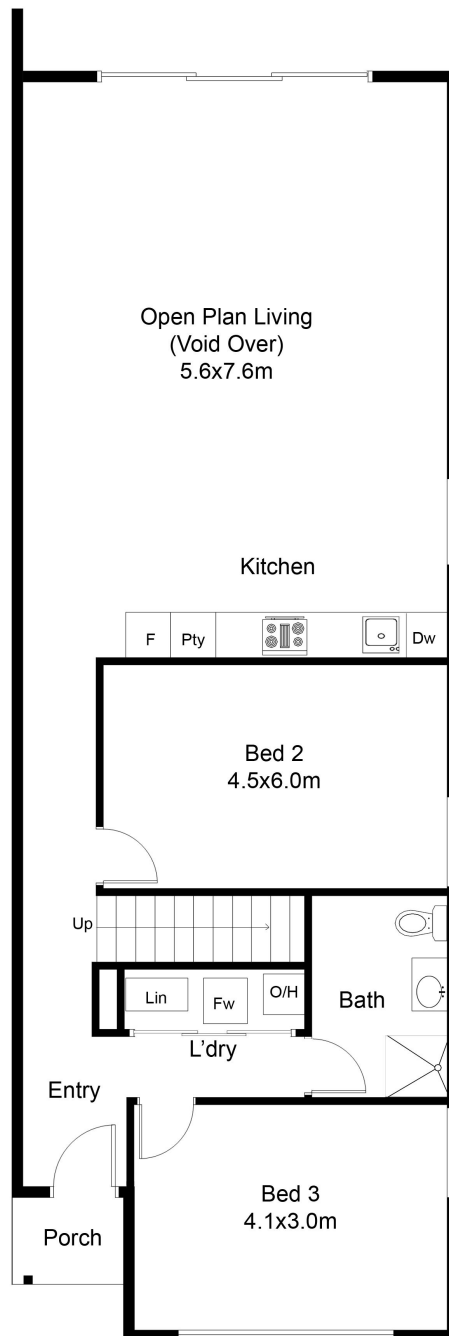
## ANOTHER SOLD BY TEAM KING!

**Type** : House  
**Sold Date** : Thursday, 5th March 2020  
**Land** : 239 m2  
**Building Size** : 153 m2

**Council Rates** : \$1,300.00/year (approx)  
**Water Rates** : \$800.00/year (approx)

**Justine King**

0452 554 647



## GROUND FLOOR PLAN

This floor plan including furniture, fixture measurements and dimensions are approximate and for illustrative purposes only.  
 Boxbrownie.com gives no guarantee, warranty or representation as to the accuracy and layout.  
 All enquiries must be directed to the agent, vendor or party representing this floor plan.

House	97.12m <sup>2</sup>
Patio	1.13m <sup>2</sup>
Total	98.25m <sup>2</sup>

11 Jandari Mews Success