

15 Peregrine Circle Beeliar, WA

4 2 2

PLEASE CALL TO VIEW THIS PROPERTY!

Team KING is proud to introduce 15 Peregrine Circle, BEELIAR to the market here in WA.

This well positioned Ross North build sits on a 642 sqm parcel of land and is filled with functionality, an abundance of space and is perfect for everybody. You will love what this property has to offer, whether you're tucked away in the home theatre or sitting out on the timber decking patio watching the sunset.

Enter into this property through the large undercover portico. Greeted with double doors which open to a large entrance hallway and 31-course ceiling.

With a large open plan living, this home isn't short of space and with plenty of natural light it really compliments the floor plan. Adjacent to the living area is a great sized outdoor alfresco entertaining area with BBQ gas point overlooking the backyard with easy-care gardens and plenty of room for a pool. There is side access with a large area perfect to

Another SOLD by Team King

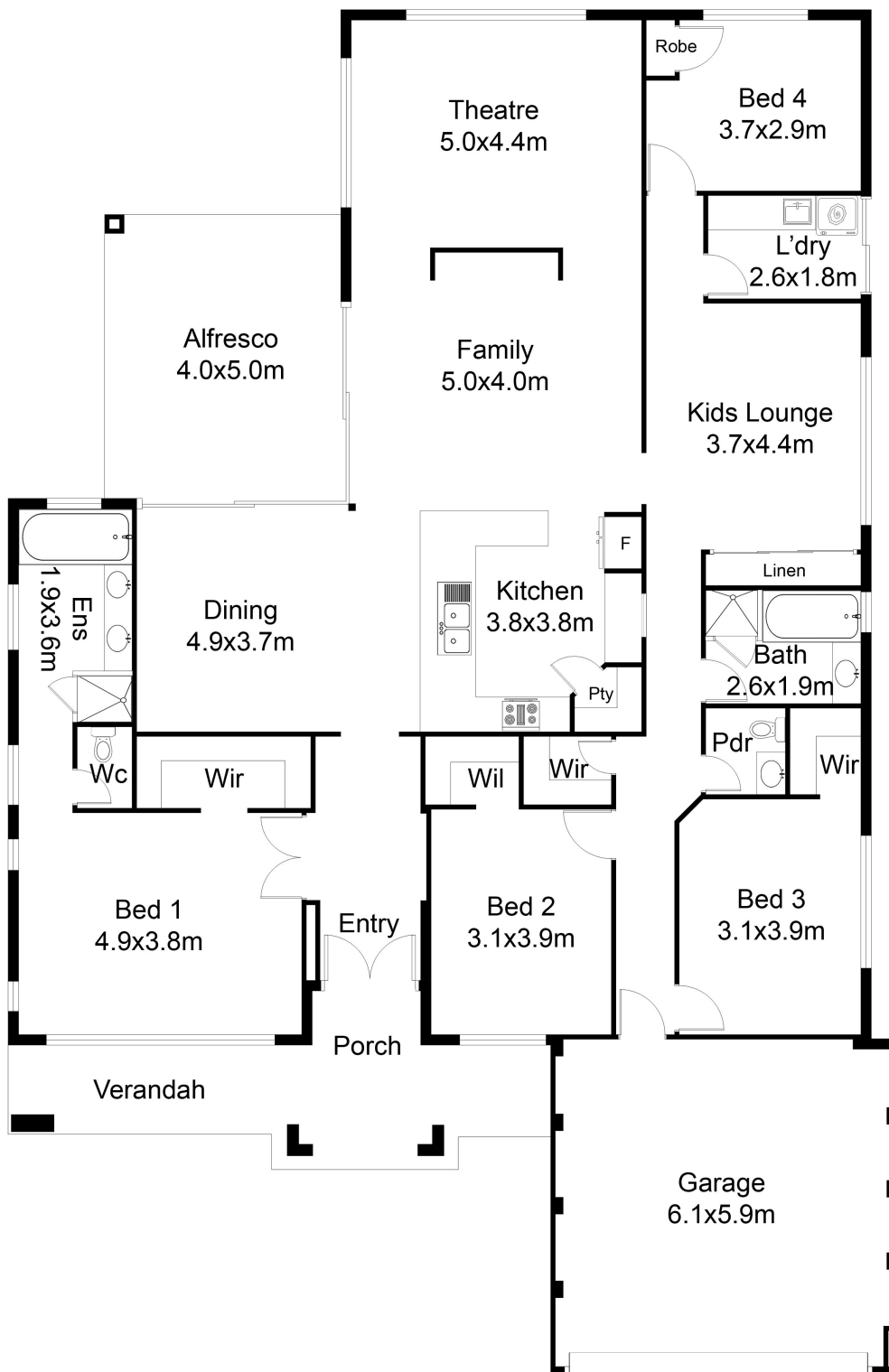
Type : House
Sold Date : Sunday, 8th March 2020
Land : 642 m2
Building Size : 223 m2

Council Rates : \$2,100.00/year (approx)

Water Rates : \$1,200.00/year (approx)

Justine King

0452 554 647



FLOOR PLAN

This floor plan including furniture, fixture measurements and dimensions are approximate and for illustrative purposes only. Boxbrownie.com gives no guarantee, warranty or representation as to the accuracy and layout. All enquiries must be directed to the agent, vendor or party representing this floor plan.

Total:297.3m²

15 Peregrine Circle Beeliar