



5 Justice Link Atwell, WA

3
 2
 2

ANOTHER SOLD BY BRIAN DEVEREUX WITH OPENNN NEGOTIATION

The property has met reserve and is UNDER OFFER!

IT'S NOT on a busy road it's in a quiet location so whether you are after lock and leave, low maintenance, purely investment or just somewhere fantastic to live you are going to LOVE it!

A 3 min walk to Aubin Grove train station and Woolworths supermarket you can see the amazing convenience this spacious and light filled home has to offer.

Freshly painted throughout there's not a cent to spend!

It's secure, clean and fresh with fabulous high ceilings, a huge King size master brm with very roomy en suite, 2 more queen sized brms and the 'one touch' comfort of reverse cycle air conditioning.

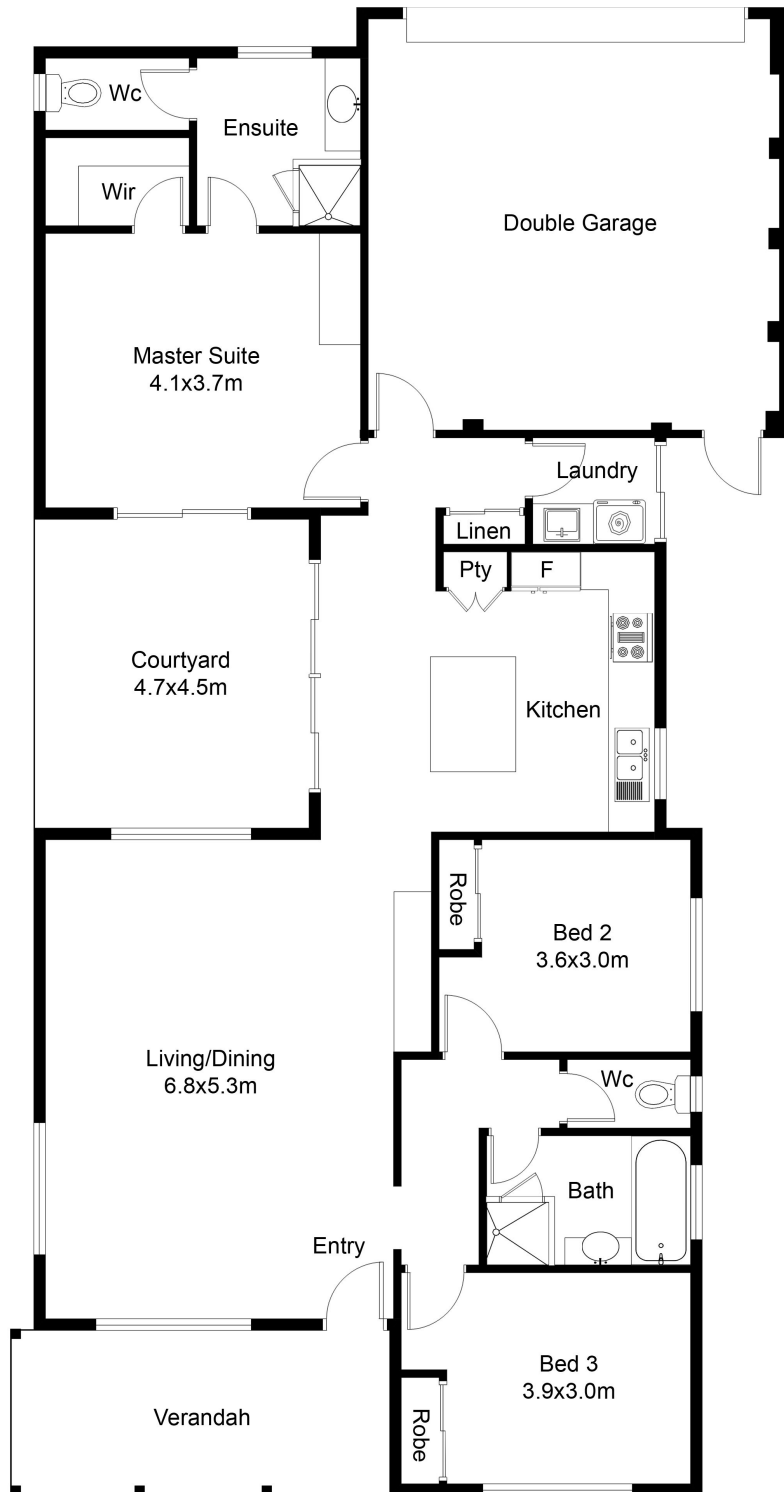
UNDER OFFER

Type : House
Sold Date : Monday, 27th April 2020
Land : 288 m2
Building Size : 138 m2

Council Rates : \$1,724.00/year (approx)

Water Rates : \$1,260.00/year (approx)

Brian Devereux



FLOOR PLAN

This floor plan including furniture, fixture measurements and dimensions are approximate and for illustrative purposes only. Boxbrownie.com gives no guarantee, warranty or representation as to the accuracy and layout. All enquiries must be directed to the agent, vendor or party representing this floor plan.

5 Justice Link, Atwell WA 6164