



7 Scrubwren Beeliar, WA

4 2 2

## SOLD BY BRIAN DEVEREUX

The seller is extremely motivated to sell and you certainly don't want to miss out on this location and land size!

Set on an elevated block in the Meve estate this unique home offers plenty to the family buyer or investor.

The options here are endless! There is room for a pool, a separate master suite upstairs with its own balcony and views to Garden Island where you can watch the serene sunsets.

Stylish vitreous tiling extends from the entry through the main living areas and kitchen to the games/activity rm. The outdoor entertaining area Includes a huge patio and extensive lawn area perfect for the kids to play!

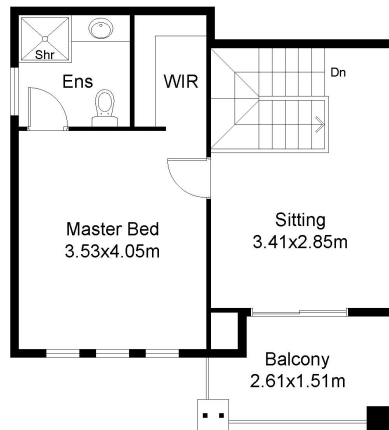
To view this home please email the agent without delay

## SOLD

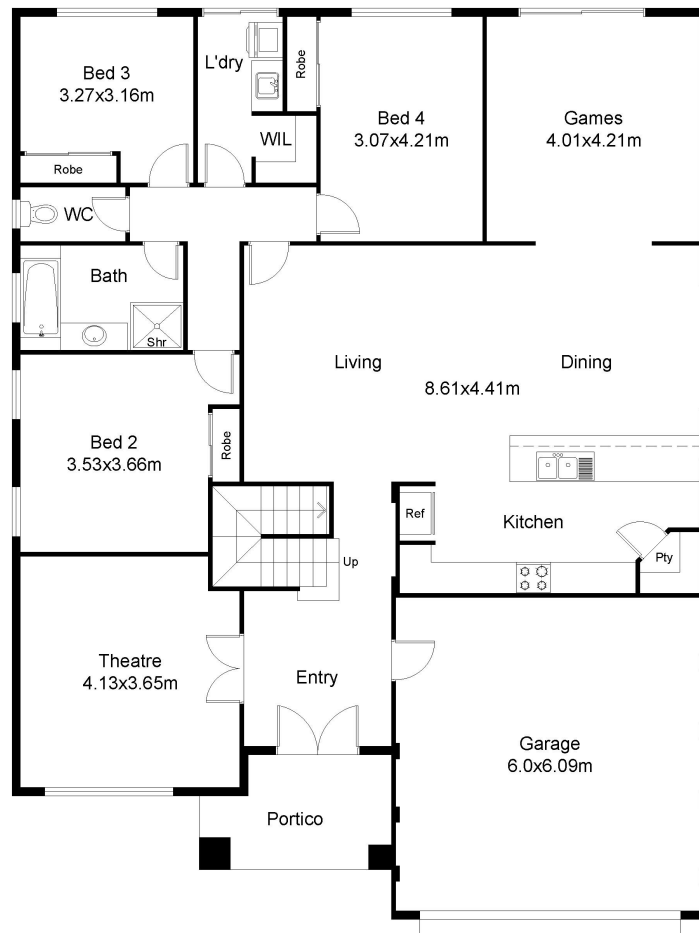
**Type** : House  
**Sold Date** : Sunday, 12th June 2022  
**Land** : 594 m2  
**Building Size** : 268 m2

**Water Rates** : \$1,315.50/year (approx)

Brian Devereux



FIRST FLOOR PLAN



GROUND FLOOR PLAN

This floor plan including furniture, fixture measurements and dimensions are approximate and for illustrative purposes only. BoxBrownie.com gives no guarantee, warranty or representation as to the accuracy and layout. All enquiries must be directed to the agent, vendor or party representing this floor plan.

7 Scrubwren Vista Beeliar