



37 Turnbury Park Drive Jandakot, WA

4
 2
 2

LOOKING FOR VALUE?

Shops, trains, hospitals, University all easily accessible thanks to the convenient location close to the Kwinana Freeway!

Things are not getting any cheaper so whether you want to take advantage of the strong rental market or live 20-25 mins from the city this is a MUST SEE property! With Cockburn Gateway Shopping Centre just down the road and Fiona Stanley Hospital Murdoch University and Roe Highway also just minutes away the location speaks for itself!

With a crisp, clean finish you will love the overall 'feel' this home provides and marvel at the size of the kitchen and living areas.

FROM \$639,000

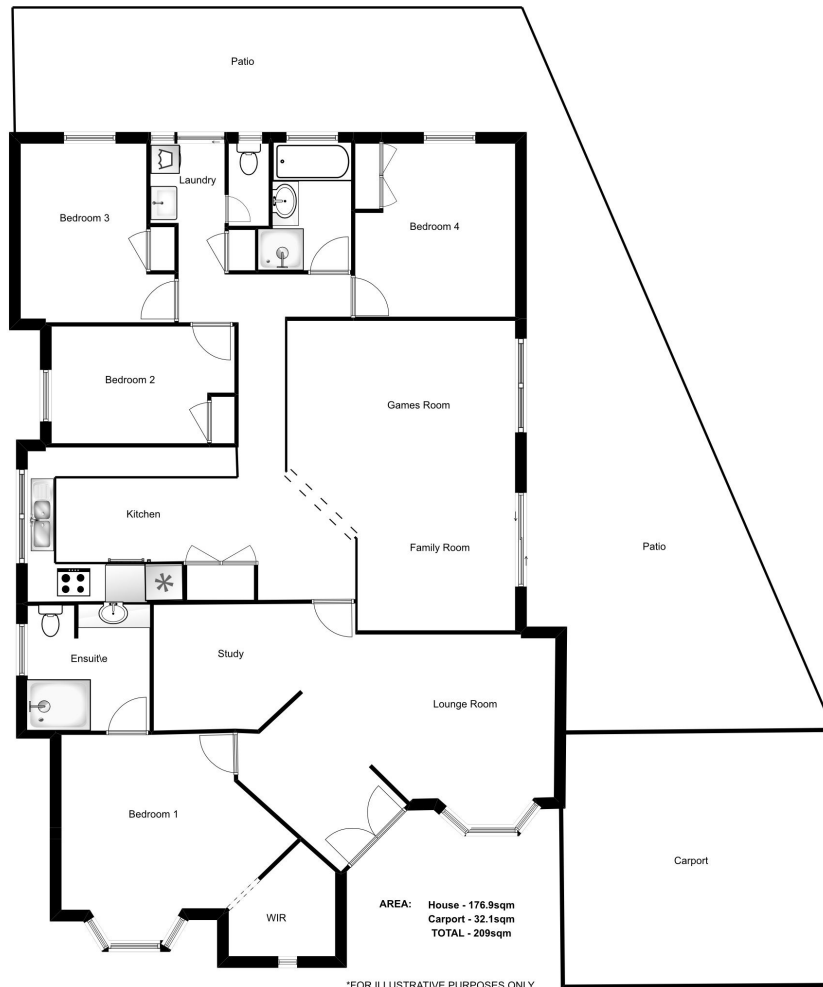
Type : House
Land : 549 m2
Building Size : 176 m2

Council Rates : \$1,854.00/year (approx)

Water Rates : \$1,200.00/year (approx)

Brian Devereux

0418 959 219



*FOR ILLUSTRATIVE PURPOSES ONLY