



10 Howe Street Beeliar, WA

4 2 2

UNDER OFFER!

It's a little bit 'special' so don't hesitate and MISS OUT!

A stunning family home located just 7 mins from Coogee Beach and Cockburn Gateway Shopping Centre has probably all the criteria you've been looking for.

Built in 2014, the living area is approximately 233 sqm and is well appointed with a beautiful kitchen, practical tiled flooring throughout the main living areas and very generous bedroom sizes.

Internally the features include;

- Study
- Theatre Room
- Activity Room
- Family & Games areas

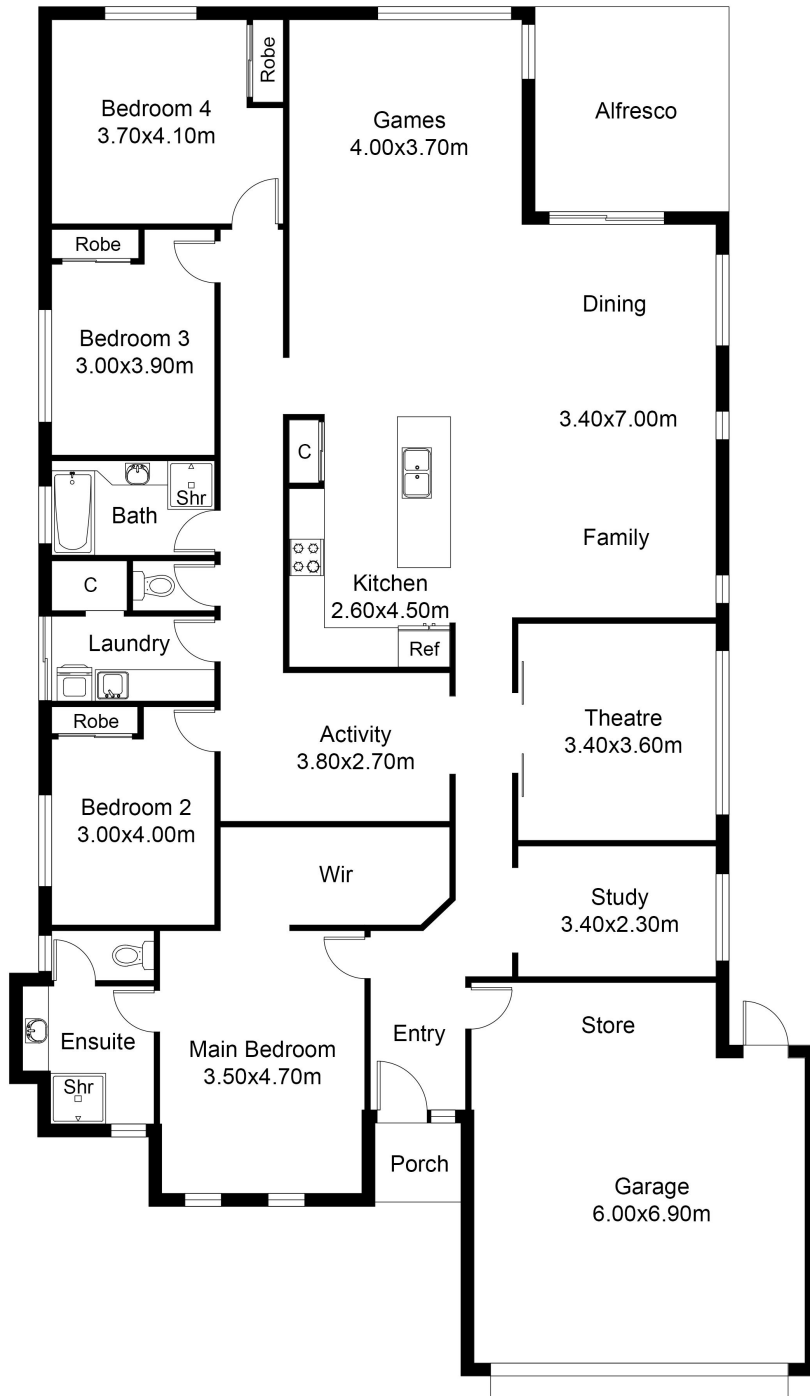
SOLD!

Type : House
Sold Date : Thursday, 18th August 2022
Land : 573 m2
Building Size : 233 m2

Council Rates : \$2,223.50/year (approx)

Water Rates : \$1,350.84/year (approx)

Brian Devereux



FLOOR PLAN

This floor plan including furniture, fixture measurements and dimensions are approximate and for illustrative purposes only.
 BoxBrownie.com gives no guarantee, warranty or representation as to the accuracy and layout.
 All enquiries must be directed to the agent, vendor or party representing this floor plan.

10 Howe Street Beeliar