



gateway



4 Lilac Pass Bertram, WA

4 bedrooms, 2 bathrooms, 2 cars

UNDER OFFER - 3 OFFERES RECEIVED!

TOO LATE!!

A perfect location opposite parkland and within easy distance of bus route, school and shops!

Don't waste time thinking about it or you'll miss out!

It doesn't matter if you are buying a family home or looking for an investment you CAN'T go wrong here!

Spacious inside and out, you'll love the big bedrooms the separate theatre plus the HUGE family room while outside entertaining will be a breeze all year round with an extensive under cover area.

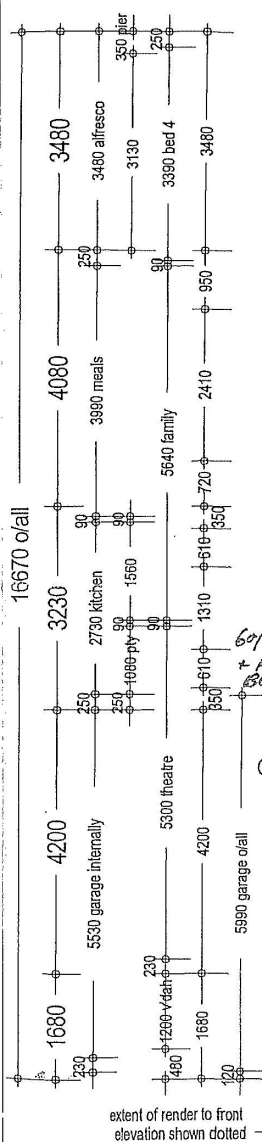
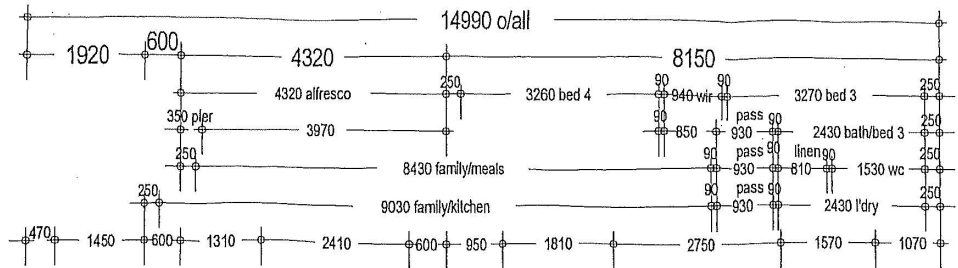
Type : House
Sold Date : Monday, 5th September 2022
Land : 506 m2
Building Size : 200 m2

Council Rates : \$2,178.60/year (approx)

Water Rates : \$1,100.22/year (approx)

Brian Devereux

GLAZING AREA
CALCULATED
= 21.36%



NOTE:
REQUIRE FURTHER CHANGES TO COMPLY WITH THE
PROVISIONS OF THE BUILDING CODE OF AUSTRALIA
BECAME EFFECTIVE ON JULY 1st. 2003

