

3 Geikie Glade Wandl, WA

4 2 2

INVESTORS ONLY

Excellent return on investment here!

Leased at \$650pw this one should really catch your eye!!

Located in the vibrant community of the Honeywood Estate and close to the Kwinana freeway, this home appeals to SAVVY investors and is so easy to add to your portfolio

Check out the floorplan! This has been an excellent income producing investment for some time, the unique design provides accommodation with 2 kitchens and the ability to create separate family living areas. In the current climate its tailored made for success!

Current rental return is \$650pw so what are you waiting for??

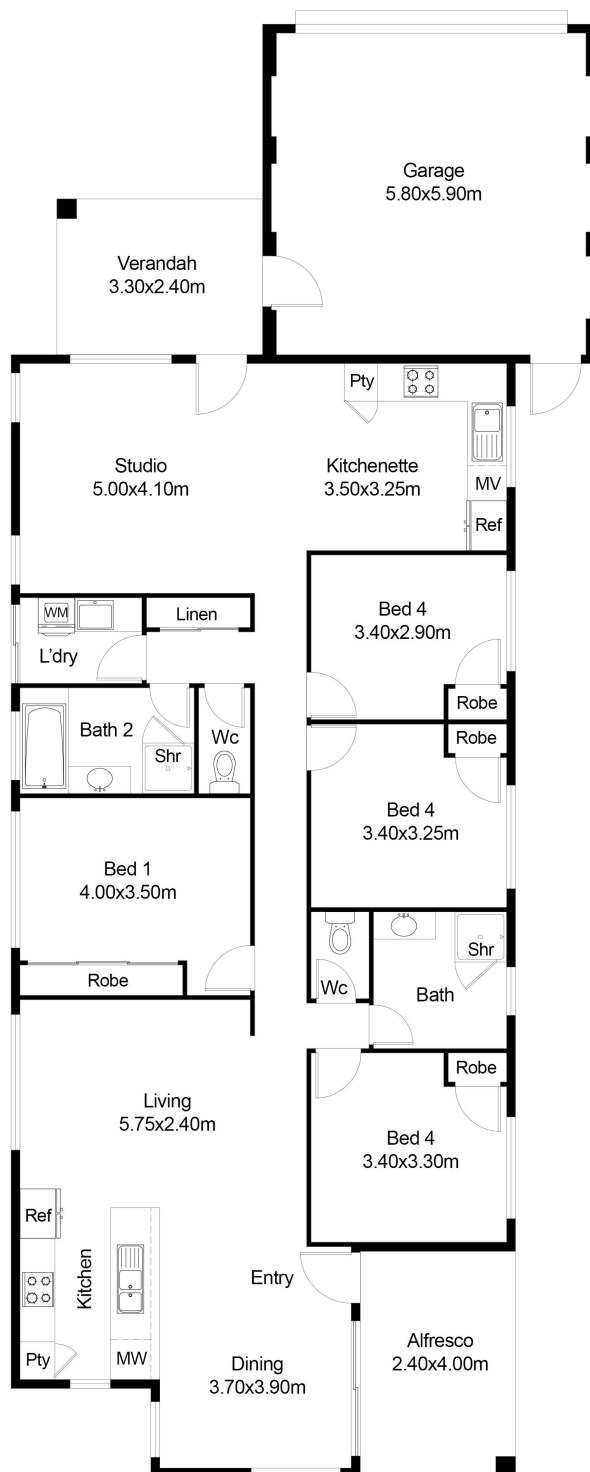
Features include:

Type : House
Sold Date : Sunday, 22nd January 2023
Land : 333 m2

Council Rates : \$2,387.82/year (approx)

Water Rates : \$1,186.80/year (approx)

Brian Devereux



This floor plan including furniture, fixture measurements and dimensions are approximate and for illustrative purposes only. BoxBrownie.com gives no guarantee, warranty or representation as to the accuracy and layout. All enquiries must be directed to the agent, vendor or party representing this floor plan.

3 Geikie Glade Wand