



12 Alliance Entrance Atwell, WA

4 2 2

## 4 BUYERS + 8 BIDS = UNDER OFFER

4 x REGISTERED BIDDERS FOUGHT IT OUT

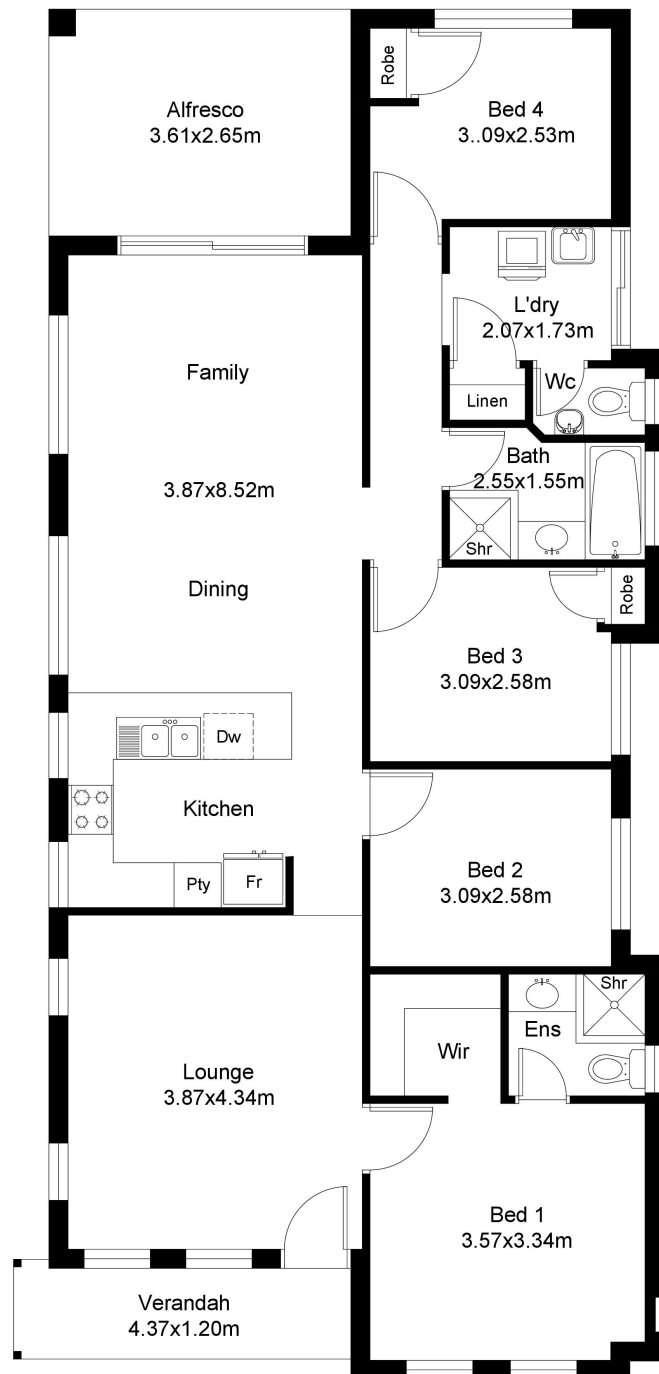
Another gone with BRIAN DEVEREUX and Openn Negotiation (flexible conditions online auction).

Downsizing, just entering the market or investing this IS IT! The perfect home with a location that means everything is at your fingertips.

- Freeway, train line, bus route, shops (all 100m-400m away), schools plus a Daycare centre over the road so you won't need the car!
- New flooring
- Freshly painted
- New window treatments
- LED Downlights throughout & Rooftop solar panels
- Security-Alarm system

Type : House  
Sold Date : Wednesday, 30th November 2022  
Land : 371 m2

**Brian Devereux**



## FLOOR PLAN

This floor plan including furniture, fixture measurements and dimensions are approximate and for illustrative purposes only. BoxBrownie.com gives no guarantee, warranty or representation as to the accuracy and layout. All enquiries must be directed to the agent, vendor or party representing this floor plan.

AREA	
HOUSE AREA	121.66
GARAGE	34.46
VERANDAH	5.40
ALFRESCO	11.88
TOTAL AREA	173.39

# 12 Alliance Entrance Atwell