



7 Mystic Elbow Atwell, WA

 4
  2
  2

7 X REGISTERED BIDDERS AND GONE!!

It is reluctantly, that the proud sellers are letting go of a home that will create for you, a lot of great memories, good times, celebrations and the lifestyle you've been dreaming of!

One of Atwells most desired addresses where the neighbours are 'fantastic' and houseproud, in a location so convenient, you're going to love coming home to this everyday!

Stylish, elegant, expansive, classy, SIMPLY SUPERB! The superlatives just roll off the tongue the minute you arrive, as the street appeal lures you in and polished blackbutt flooring via the double door entry, provides a very warm welcome.

* 277 sqm of living area with high ceilings and spacious rooms throughout

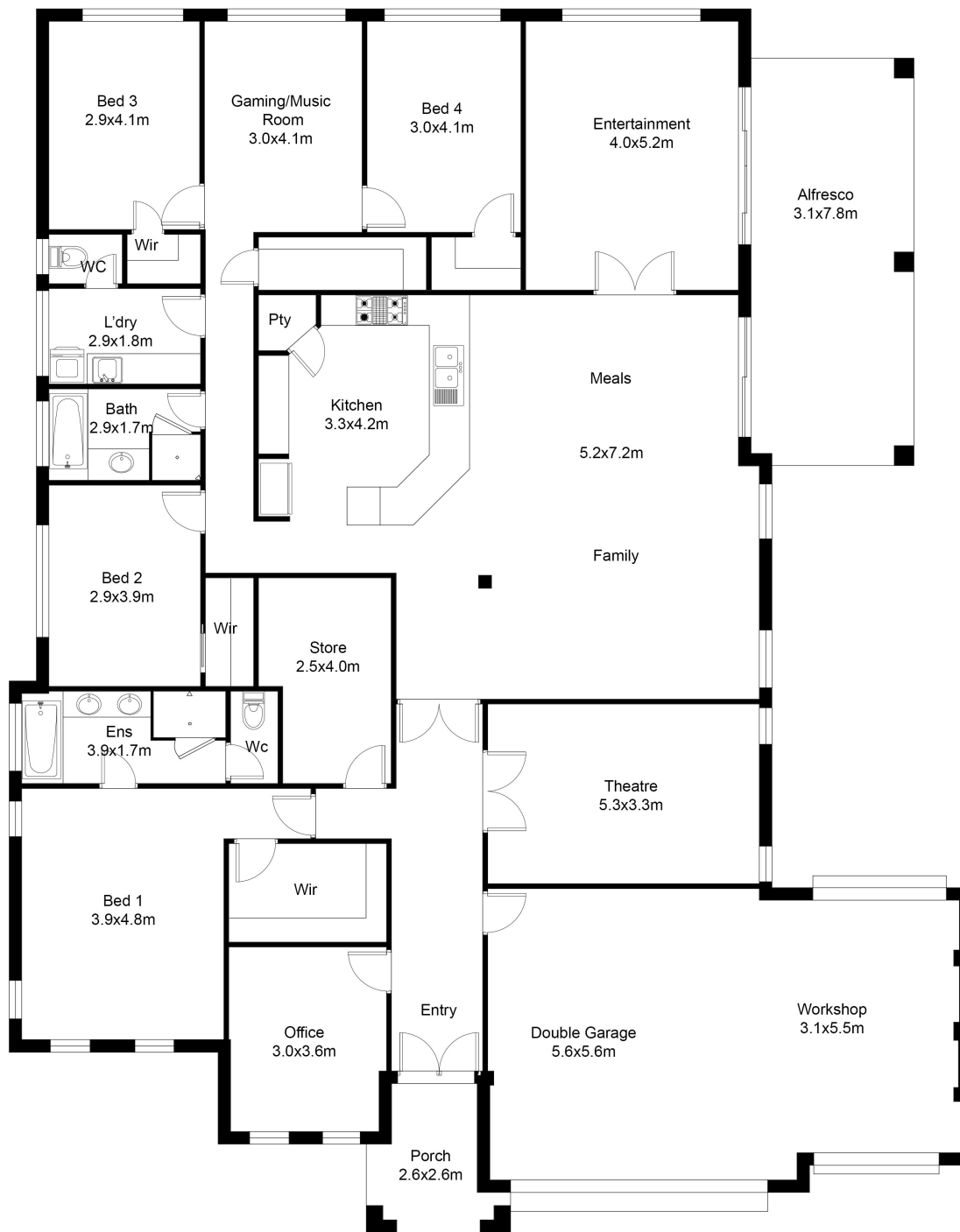
* 702 sqm of prime real estate

Type : House
Sold Date : Monday, 3rd February 2025
Land : 702 m2
Building Size : 277 m2

Council Rates : \$2,484.92/year (approx)

Water Rates : \$1,599.18/year (approx)

Brian Devereux



FLOOR PLAN

This floor plan including furniture, fixture measurements and dimensions are approximate and for illustrative purposes only. BoxBrownie.com gives no guarantee, warranty or representation as to the accuracy and layout. All enquiries must be directed to the agent, vendor or party representing this floor plan.

7 Mystic Elbow Atwell